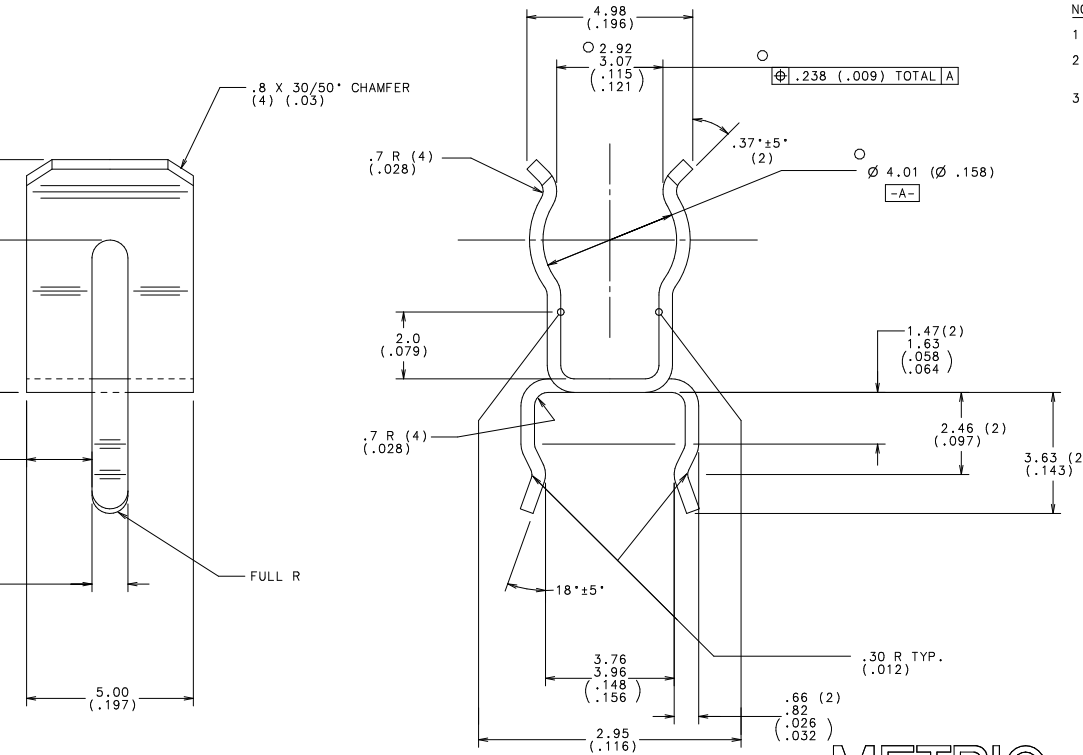


SUGGESTED MOUNTING HOLE PATTERN  
FOR 4.5 X 15mm FUSE (2AG)  
SCALE = 4:1



NOTES:

1. DECIMAL EQUIVALENT = (.XXX)
2. TOOLING MUST ALSO BE CAPABLE OF PRODUCING PART No. 01110501Z.
3. HEAT TREAT 600°F FOR 2 HOURS.

2	010113	HIGH PURITY TIN	.015	LB
1	046184	BeCu .41(.016) THICK	.858	LB
NO	COMPONENT NO	DESCRIPTION	QTY/M	U/M

BILL OF MATERIAL

UNLESS OTHERWISE SPECIFIED, DIMENSIONS DO NOT INCLUDE PLATING.				
O	DENOTES CRITICAL CHARACTERISTICS.			
CPK	DENOTES CPK DIMENSIONS, -MINIMUM CPK VALUE			
(ST)	DENOTES A CHARACTERISTIC THAT PROVIDES AN INDICATION OF PROCESS PERFORMANCE, PROCEDURE FOR MEASUREMENT AND TRACKING TO BE DEFINED IN LITTELFUSE INSPECTION INSTRUCTIONS.			
CP	DENOTES CP DIMENSIONS, -MINIMUM CP VALUE MUST BE WITHIN THE DIMENSIONAL LIMITATIONS SHOWN ON DRAWING AND INITIALLY LOCATED TO ALLOW FOR MAXIMUM TOOL LIFE.			
MATERIAL SPEC				
COPIES TO				
1	9	18		
2	10	19	FINISH	TIN PLATE (0001) .0005 PER L / SRB E8-001002-B
3	12	20	DRW	PJM DATE 05/26/00 SCALE 10:1
4	13	21	CHK	DATE SUPER DR
5	14	23	TPPS	DATE RAW STR WT LBS/M
6	15	33		
7	16	43		
8	17	53		
TOLERANCE UNLESS OTHERWISE SPECIFIED FRACTION ± ANGULAR ±				
TWO PLACE DEC ± .25				
THREE PLACE DEC ± .10				
TITLE 2 XG 05 X 20mm P.C. MOUNT FUSE CLIP W/OUT EARS				